

What are the facilities like?

- Facilities vary depending on location, town and province, however, accommodation is provided while the crew is working. Employees will either stay in camps or hotels depending on the location of the job.



Do you drive out to the site?

- 80% of the time you will be required to drive from point of rest (hotel, camp) to the job site - crews have company vehicles that provide transportation for crews to and from the jobsite. 20% you may be staying directly on the worksite, have bus transportation organized or be required to travel in a helicopter to the job site.



Do you stay in camps?

- Yes. Camps are set up in remote areas where hotels are unavailable, or location of the camp is more feasible than staying in a hotel. Camps vary depending on the managing company, and location. All meals in camp are included; therefore the daily living allowance of \$40.00/day is not passed out. Camps include washroom facilities, recreation rooms (include exercise equipment, televisions, etc.) laundry, towels & bedding, and open kitchens.

* Please note, that as of January 1, 2008 this two day program will be discontinued and Level 1 – Chainsaw Basics, a three day course will be taking its place.



Canadian Association of Geophysical Contractors

#1045, 1015 - 4th Street S.W.
Calgary, Alberta
T2R 1J4
Canada

Telephone: (403)265-0045
Fax: (403)265-0025
Email: info@cagc.ca

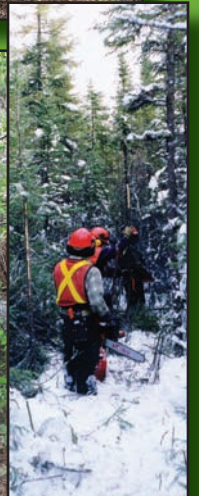
www.cagc.ca

Check out our
Employment Bulletin Board at
www.juggy.ca

To enhance your job search
go to **Membership Link** under
Quick Links and select
Line Cutting
for a complete listing of
CAGC member companies.

Revision date January 2007

Careers in Seismic



Faller

Position Name: Faller

Description of Position:

- Utilize chainsaws to clear trees and undergrowth in order to construct a trail 1.75-3m wide
- Reviews falling area, checks falling area for danger trees and applies knowledge of tree characteristics and cutting techniques to control direction of fall.
- Appraises tree for characteristics, such as twists, rot, and heavy limb growth.
- Selects and clears proper escape route, communicates falling plan and ensures the active falling area is clear of all workers (must comply with distance standard).
- Clears brush and debris from work area.
- Clear undergrowth, cuts saplings and other trees from falling path
- Remove dangerous trees that could fall into the work place
- A valid driver's license is an asset and may be required by some companies in order to obtain employment. Potential candidates should also be aware that a driver's abstract may be required.
- It should also be noted that some companies will require drug and alcohol testing prior to employment



Is a post-secondary education required?

- In order to advance from the buckler position to the faller position an employee must complete an application form prior to acceptance into the Faller program. Once the application and payment are received, candidates will be sent a Fallers package which should be studied prior to their evaluation. In order to become a certified Faller, candidates must achieve a minimum of 75% on their written & practical exams.*

What is the Career Path is there any advancement from this position?

- From this position and through training offered by Enform as well as on the job training; Fallers have the opportunity to advance into Faller Tutors and Supervisors.



Is there any training provided?

- Initial training for someone new to the industry may include but is not limited to:
 - Company orientations (review of company policies, procedures, expectations etc.)
 - Basic Safety Awareness (introduction to petroleum industry hazards, tasks, safe work procedures, emergency response planning, communication, tools, driving, etc.)
 - WHMIS (awareness training for Workplace Hazardous Materials Information System)
 - H2S Aware (awareness training for hydrogen sulphide gases including acceptable working levels, properties of the gas, safe procedures for working in around gaseous areas)
 - Transportation of Dangerous Goods (TDG)
 - All Terrain Vehicle (ATV)
 - First Aid/CPR
 - General Oilfield Driver Improvement (GODI) (awareness training for operating vehicles 5500 kg GVW and over)
- Additional Seasonal Training may be included such as:
 - Wildlife Awareness (awareness training for dealing with wildlife- specifically bears in the spring/ summer and fall)
 - Cold Weather Awareness (awareness training for dealing with cold illnesses, clothing, blizzard conditions, appropriate footwear, industry hazards)

Generally most companies will provide their employees with up-to-date training in order to keep their skills current and up to the industry standard. However the responsibility may lie with the employee or potential employee to obtain some training courses on their own time.



Hours Worked/Standard Shift Rotation:

- 12- 14 hours per day, seven days a week. Includes travel time to and from the jobsite as well as lunches and breaks
- Time off Rotation varies from 21 days on/4 days off, 24 days on/4 days off, 28 days on/7 days off



What is the range of pay:

- Starting wage for industry new comers is approximately \$18.00 – 20.00/hour
- Most employers cover all accommodation costs while the employee is working, and a daily living allowance (Hotshot) of \$40.00/day is given to each employee to be used for food. When interviewing with companies it is best to inquire if this benefit is offered.

